



HPPS Micro Capsule Filters

Dual Layered PES Membrane

HPPS Micro Capsules are designed for laboratory use with their small filtration area and size. They are made from all the same materials as our larger HPPS filters to ensure consistent results at every scale. These validated, dual-layered PES membrane capsules are well suited for sterilizing products with high particle loads. Pore sizes range from 0.03 to 1.0 μm .

Designed with a High Capacity PES prefilter layer and Asymmetric PES final filter layer, HPPS Micro Capsule filters deliver high flow across a wide pH range. The HPPS filter's low binding characteristics make them ideal for filtering products with preservatives and proteins that can adsorb to media. They are flushed to remove manufacturing debris and reduce extractables. Products are 100% integrity tested. HPPS Micro Capsules are available pre-sterilized.

Critical Process provides unrivaled delivery times, technical consulting before purchasing, and very competitively priced high-performance products. Our comprehensive testing & analysis and validation services support your team whenever they need it. Your process experts partnering with our filtration experts is how we deliver your company's solution right the first time.

Sterilizing Filters

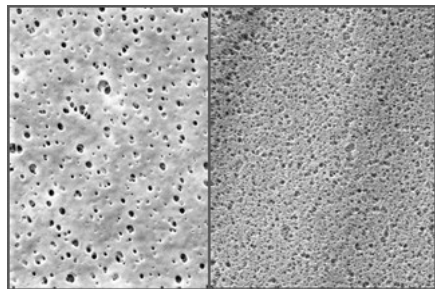


MICRO CAPSULES – Nominal Dimensions

Body Length: 1.9 in. (4.8 cm)

Overall Length: 2.8 to 3.8 in. (7.1 to 9.7 cm)

Outside Diameter: 2.6 in. (6.6 cm)



High Capacity PES / Asymmetric PES

HPPS filters are recommended for:

- SVPs & LVPs
- Diagnostics
- Buffers
- WFI, Water Purification
- Vaccines
- Biologicals
- Ophthalmics

Maximum Operating Parameters

MICRO CAPSULES	
Liquid Operational Pressure	80 psi at 68 °F (5.52 bard at 20 °C)
Gases Operational Pressure	60 psi at 68 °F (4.14 bar at 20 °C)
Operating Temperature (water)	110 °F at 30 psid (43 °C at 2.07 bard)
Forward Differential Pressure	50 psid at 68 °F (3.45 bard at 20 °C)
Reverse Differential Pressure	40 psid at 68 °F (2.76 bard at 20 °C)
Recommended Changeout Pressure	35 psid (2.41 bard)

Sanitization & Sterilization

Autoclave	250 °F (121 °C), 30 min, 25+ cycles
Chemical Sanitization	Performed using industry standard concentrations of hydrogen peroxide, peracetic acid, sodium hypochlorite and other selected chemicals.

Filtration Area (Nominal)

Dual Layer	
Area	0.50 ft ²
	465 cm ²

Integrity Testing

FINAL LAYER PORE SIZE	BUBBLE POINT MINIMUM*	
µm	PSIG	BARG
0.03	**	**
0.10	**	**
0.22	50	3.5
0.45	25	1.7
0.65	19	1.3
0.80	15	1.1
1.0	10	0.7

* For water wetted membrane

** Test pressure exceeds operational limits of Micro capsule filters.

Construction Materials

Filtration Media	High Capacity PES membrane prefilter layer with polyester support and PES membrane final filter layer
Media Support	Polypropylene
End Caps, Center Core, Outer Support Cage, Micro Capsule Housing	Polypropylene
Sealing Method	Thermal Bonding

Validation

HPPS Micro Capsule filters are validated using test procedures that comply with ASTM F 838-15(ae1) protocols for the determination of bacterial retention in filters used for liquid filtration. The challenge level is a minimum of 10^7 organisms per cm^2 of filter media. CPF filters have > 7-log removal when challenged with the organisms listed below (0.03 μm , 0.10 μm and 0.22 μm meet the FDA definition of sterilizing grade filters).

0.03 μm : *Acholeplasma laidlawii*

0.10 μm : *Brevundimonas diminuta*

0.22 μm : *Brevundimonas diminuta*

0.45 μm : *Serratia marcescens*

0.65 μm : *Saccharomyces cerevisiae*

Endotoxins

The levels of bacterial endotoxins in aqueous extracts from HPPS Micro Capsule filters are below current USP limits as specified for water for injection.

Extractables

HPPS Micro Capsule filters typically exhibit low levels of non-volatile residues.

TOC and Conductivity

HPPS Micro Capsule filters conform with TOC standards of USP <643> and the water conductivity standards of USP <645> after an appropriate flush with purified water.

Toxicity Compliance

Materials used to construct HPPS Micro Capsule filters are non-toxic and meet the requirements for the MEM Elution Cytotoxicity Test and the requirements for Biological Reactivity Tests in the current version of the United States Pharmacopeia (USP) for Class VI - 121 °C Plastics.

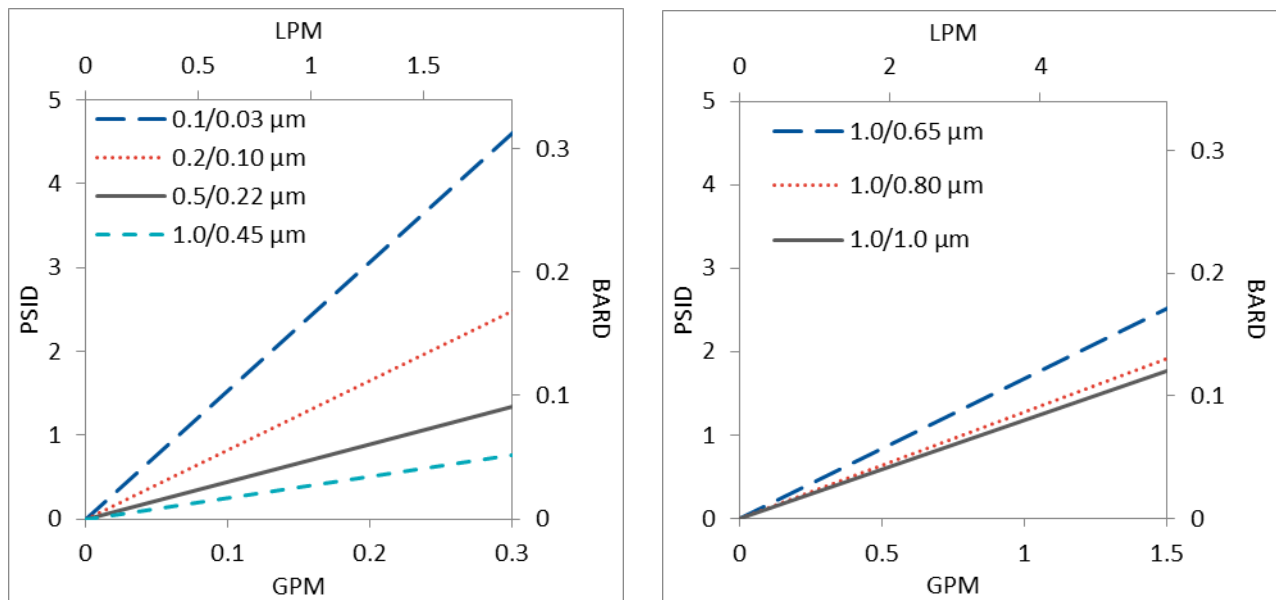
Non-Fiber Releasing

HPPS Micro Capsule filters comply with Title 21 CFR sections 210.3 (b)(6) and 211.72, for non-fiber releasing filters.

FDA Compliance

Materials meet the requirements listed by the FDA as appropriate for use in articles intended for repeated food contact as specified in Title 21 CFR sections 174.5, 177.1500, 177.1520, 177.1630, 177.2440, and 177.2600 as applicable.

Flow Rates for HPPS Micro Capsules by Pore Size



Flow rates for Micro Capsule filters are per filter. The test fluid is water at ambient temperature. Flows are tested using a Micro capsule filter with ½" Sanitary inlet and outlet ports. Rates will vary based on end configuration of the Micro capsule.

HPPS Micro Capsule Filters Ordering Information

All Critical Process filters are configurable to meet customer specifications.
Fill in the corresponding codes in the boxes below to build your Part Number.

To consult with one of our technical team members, request a quote or place an order:
call (603) 880-4420 or [contact us here](#).

HPPS Micro Capsule

MIC HPPS 000 -

Prefilter Pore Size Code	Final Layer Pore Size Code	Inlet	Inlet Vent Port	Outlet	Side Vent O-Ring**
-10 = 0.1 μ m -20 = 0.2 μ m -50 = 0.5 μ m -80 = 0.8 μ m 1-0 = 1.0 μ m	-03 = 0.03 μ m -10 = 0.10 μ m -20 = 0.22 μ m -40 = 0.45 μ m -60 = 0.65 μ m -80 = 0.80 μ m 1-0 = 1.0 μ m	1 = 1/8" Hose Barb 2 = 1/4" Hose Barb 3 = 1/2" Hose Barb 4 = Luer Lock 5 = 1/2" Sanitary* 6 = 1/4" MNPT	1 = 1/8" Hose Barb 2 = 1/4" Hose Barb 3 = 1/2" Hose Barb 4 = Luer Lock 6 = 1/4" MNPT 7 = Side Bleed Valve	1 = 1/8" Hose Barb 2 = 1/4" Hose Barb 3 = 1/2" Hose Barb 3B = 1/2" Hose Barb with Filling Bell 4 = Luer Lock 5 = 1/2" Sanitary* 6 = 1/4" MNPT	B = Buna E = EP S = Silicone V = Viton (or FKM) K = FFKM

Pre-Sterilized or Not
S = Pre-Sterilized
N = Not Sterilized

Outlet Vent Port
1 = 1/8" Hose Barb
2 = 1/4" Hose Barb
3 = 1/2" Hose Barb
4 = Luer Lock
6 = 1/4" MNPT
7 = Side Bleed Valve

*When choosing the Sanitary Inlet/Outlet, the Luer Lock or bleed valve option is required for the Vent Port
** O-Ring is only available on Bleed Valve



One Chestnut Street
Nashua, NH 03060
603.880.4420
FAX: 603.880.4536
CriticalProcess.com

The information contained herein is subject to change without notice. The Critical Process Filtration logo is a trademark of Critical Process Filtration, Inc. Viton is a trademark of DuPont Performance Elastomers L.L.C.
© 2025 Critical Process Filtration, Inc. • All Rights Reserved

Data Sheet HPPS Micro DS Rev -