



HPPD Filters

Pleated Polypropylene Depth Media



HPPD cartridge and capsule filters are constructed with pleated Polypropylene depth media for prefiltering critical pharmaceutical and healthcare liquids including water, chemicals and solvents. Pore sizes range from 0.10 to 3.0 μm and filter sizes scale from laboratory to full production using identical materials to ensure consistent results.

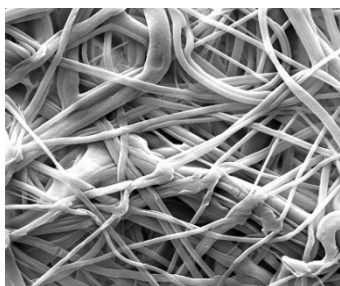
Designed for high capacity, these hydrophilic filters have superior retention and protect downstream filters by removing large amounts of particulate and other contaminants. HPPD filters are rated at 99.9% efficiencies at the indicated pore size.

Critical Process provides unrivaled delivery times, technical consulting before purchasing, and very competitively priced high-performance products. Our comprehensive testing & analysis and validation services support your team whenever they need it. Your process experts partnering with our filtration experts is how we deliver your company's solution right the first time.

Clarification & Prefiltration



CARTRIDGES – Nominal Dimensions
Length: 5 to 40 in. (12.7 to 101.6 cm)
Outside Diameter: 2.75 in. (7.0 cm)



HPPD filters are recommended for clarification & prefiltration in:

- Chemicals
- Intermediates
- Buffers
- WFI, Water Purification
- Medications
- Ophthalmics
- Diagnostics
- Device Cleaning



CAPSULES – Nominal Dimensions
Length: 2 to 30 in. (5.1 to 76.2 cm)
Outside Diameter: 3.50 in. (8.9 cm)

Maximum Operating Parameters

	CARTRIDGES	CAPSULES
Liquid Operational Pressure	N/A	80 psi at 68 °F (5.52 bard at 20 °C)
Gases Operational Pressure	N/A	60 psi at 68 °F (4.14 bar at 20 °C)
Operating Temperature (water)	180 °F at 30 psid (82 °C at 2.07 bard)	110 °F at 30 psid (43 °C at 2.07 bard)
Forward Differential Pressure	80 psid at 68 °F (5.52 bard at 20 °C) (Liquid and Gas)	Liquid - 80 psid at 68 °F (5.52 bard at 20 °C) Gas - 60 psi at 68 °F (4.14 bar at 20 °C)
Reverse Differential Pressure	50 psid at 68 °F (3.45 bard at 20 °C)	50 psid at 68 °F (3.45 bard at 20 °C)
Recommended Changeout Pressure	35 psid (2.41 bard)	35 psid (2.41 bard)

Sanitization & Sterilization

Filtered Hot Water*	90 °C (194 °F), 30 minutes, multiple cycles, max 3 psid forward flow	N/A
Inline Steam*	275 °F (135 °C), 30 min, 25+ cycles	N/A
Autoclave*	250 °F (121 °C), 30 min, 25+ cycles	250 °F (121 °C), 30 min, 25+ cycles
Chemical Sanitization	Performed using industry standard concentrations of hydrogen peroxide, peracetic acid, sodium hypochlorite and other selected chemicals.	

*Cartridge Filters – For all elevated temperature procedures above, a stainless-steel support ring is required.

Filtration Area (Nominal)

	CAPSULES	CARTRIDGES AND CAPSULES				CARTRIDGES
Length	2"	5"	10"	20"	30"	40"
	5.08cm	12.7cm	25.4cm	50.8cm	76.2cm	101.6cm
Area	1.1 ft ²	2.9 ft ²	6.24 ft ²	12.48 ft ²	18.72 ft ²	24.96 ft ²
	0.10m ²	0.27m ²	0.58m ²	1.16m ²	1.74m ²	2.32m ²

Construction Materials

Filtration Media	Pleated Polypropylene Depth Media
Media Support	Polypropylene
End Caps, Center Core, Outer Support Cage, Capsule Housing	Polypropylene
Sealing Method	Thermal Bonding
O-Rings/Gaskets Cartridges only	Buna, Viton® (or FKM), EPDM, Silicone, FEP Encapsulated Silicone, FEP Encapsulated Viton (or FKM)

Endotoxins

The levels of bacterial endotoxins in aqueous extracts from HPPD filters are below current USP limits as specified for water for injection.

Extractables

HPPD filters typically exhibit low levels of non-volatile residues.

TOC and Conductivity

HPPD filters conform with TOC standards of USP <643> and the water conductivity standards of USP <645> after an appropriate flush with purified water.

Toxicity Compliance

Materials used to construct HPPD filters are non-toxic and meet the requirements for the MEM Elution Cytotoxicity Test and the requirements for Biological Reactivity Tests in the current version of the United States Pharmacopeia (USP) for Class VI - 121 °C Plastics.

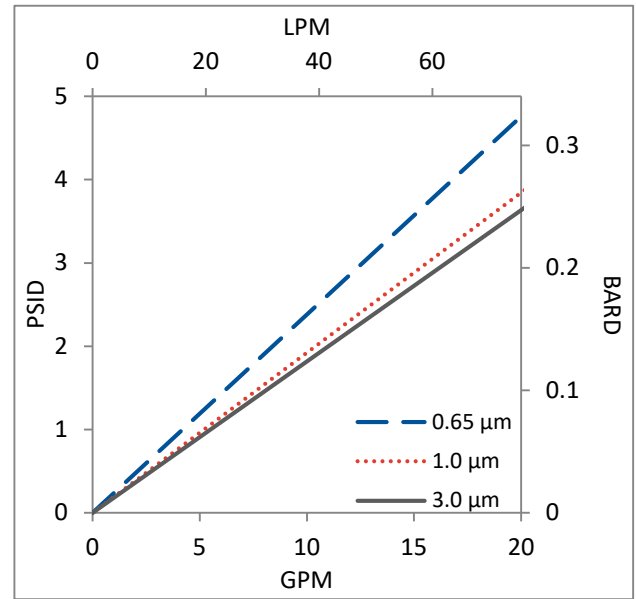
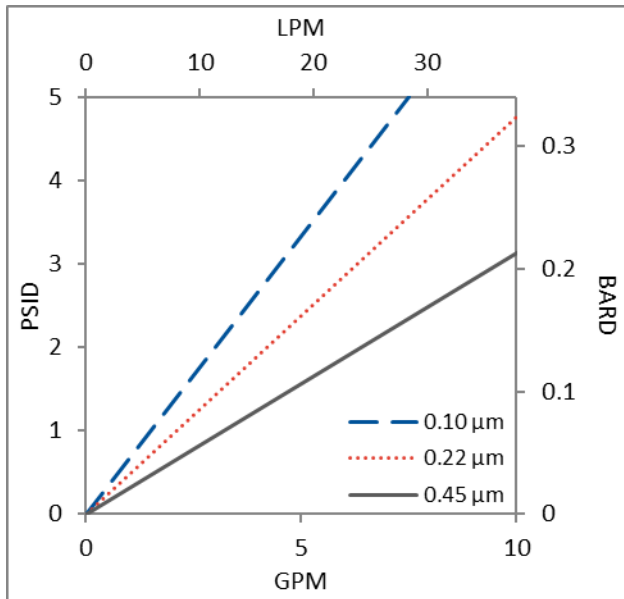
Non-Fiber Releasing

HPPD filters comply with Title 21 CFR sections 210.3 (b)(6) and 211.72, for non-fiber releasing filters.

FDA Compliance

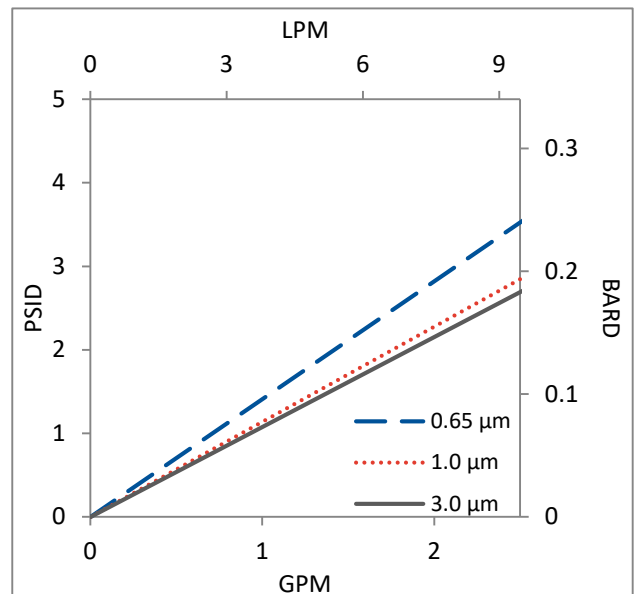
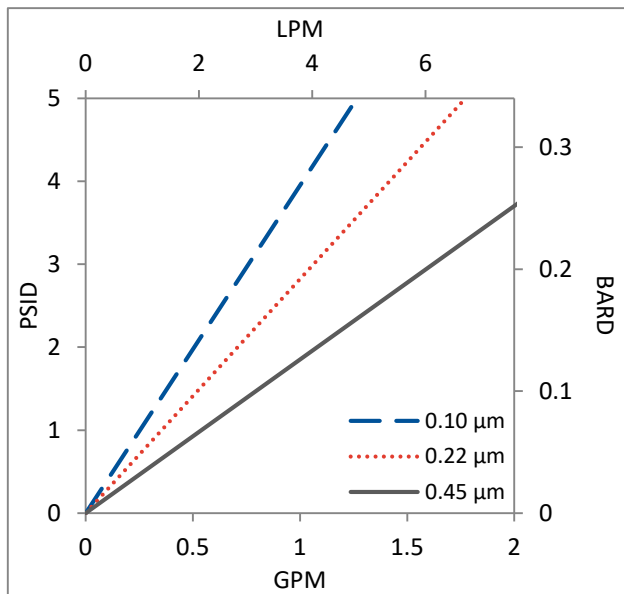
Materials meet the requirements listed by the FDA as appropriate for use in articles intended for repeated food contact as specified in Title 21 CFR sections 174.5, 177.1500, 177.1520, 177.1630, 177.2440, and 177.2600 as applicable.

Flow Rates for HPPD Cartridges by Pore Size



Flow rates for Cartridge filters are per 10-inch length. The test fluid is water at ambient temperature.

Flow Rates for HPPD Capsules by Pore Size



Flow rates for Capsule filters are tested using a 2" capsule filter with 1" sanitary inlet and outlet ports. The test fluid is water at ambient temperature. Flow rates for larger capsules will scale with filtration area. Rates will vary based on end configuration of the capsule.

HPPD Filters Ordering Information

Fill in the corresponding codes in the boxes below to build your Part Number.

To consult with one of our technical team members, request a quote or place an order:
call (603) 880-4420 or [contact us here](#).

Cartridge Filters

HPPD 000

Pore Size Code	SS Ring	Length	O-Ring/Gasket Code	End Cap Code*
-10 = 0.10 µm -20 = 0.22 µm -40 = 0.45 µm -60 = 0.65 µm 1-0 = 1.0 µm 3-0 = 3.0 µm	S = Ring N = No Ring	05 = 5 in. (12.7 cm) 97 = 9.75 in. (24.8 cm) 01 = 10 in. (25.4 cm) 19 = 19.5 in. (49.5 cm) 02 = 20 in. (50.8 cm) 29 = 29.25 in. (74.3 cm) 03 = 30 in. (76.2 cm) 04 = 40 in. (101.6 cm)	S = Silicone B = Buna V = Viton (or FKM) T = FEP Encapsulated Viton (or FKM) E = EP R = FEP Encapsulated	0 = Flat Gasket, DOE 1 = Flat Gasket/Plug 2 = 2-222 O-ring/Plug 3 = 213/119 Internal O-ring DOE 4 = 213/119 Internal O-ring/Plug 5 = 2-222 O-ring/Flat 6 = 2-226 O-ring/Flat 7 = 020 O-ring/Plug 8 = 2-222 O-ring/Spear 9 = 2-226 O-ring/Spear 21 = 2-223 O-ring/Flat 22 = 2-223 O-ring/Spear 23 = 2-222 O-ring 3 Tab/Flat 24 = 2-222 O-ring 3 Tab/Spear 25 = Short 2-222/Plug

[*Additional End Configurations Available](#)

Capsule Filters

CP HPPD 000 -

Pore Size Code	Pre-Sterilized or Not	Length	Inlet	Outlet	Side Vent Options	O-Rings
-10 = 0.10 µm -20 = 0.22 µm -40 = 0.45 µm -60 = 0.65 µm 1-0 = 1.0 µm 3-0 = 3.0 µm	S = Pre-Sterilized G = Gamma Stable N = Not Sterilized	A = 2" B = 5" 1 = 10" 2 = 20" 3 = 30"	A = 1/4" Female NPT B = 1/4" Male NPT C = 3/8" Female NPT D = 1/2" Female NPT E = 1/2" Male NPT F = 1" Sanitary G = Hose Barb* H = 1 1/2" Sanitary with side vent I = 1/2" Single Stepped Barb with side vent J = 3/4" Single Step Barb with Side Vent Y = 3/8" Compression (JACO®) (Top Luer lock vent only) Z = 6mm Quick Disconnect (Top Luer lock vent only)	A = 1/4" Female NPT B = 1/4" Male NPT C = 3/8" Female NPT D = 1/2" Female NPT E = 1/2" Male NPT F = 1" Sanitary G = Hose Barb* H = 1 1/2" Sanitary with side vent I = 1/2" Single Stepped Barb with side vent IB = 1/2" Single Stepped Barb with filling bell and side vent J = 3/4" Single Step Barb with Side Vent Y = 3/8" Compression (JACO®) (Top Luer lock vent only) Z = 6mm Quick Disconnect (Top Luer lock vent only)	1 = Luer Lock 2 = 1/8" Bleed Valve 3 = 1/4" Bleed Valve	(Bleed Valves Only) S = Silicone E = EP V = Viton B = Buna K = FFKM

*Fits hoses/tubes with inner diameter 11/32 to 9/16 inches



One Chestnut Street
Nashua, NH 03060
603.880.4420
FAX: 603.880.4536

CriticalProcess.com

The information contained herein is subject to change without notice. The Critical Process Filtration logo is a trademark of Critical Process Filtration, Inc. Viton is a trademark of DuPont Performance Elastomers L.L.C.
© 2025 Critical Process Filtration, Inc. • All Rights Reserved

Data Sheet HPPDDS Rev D