



GTM Filters

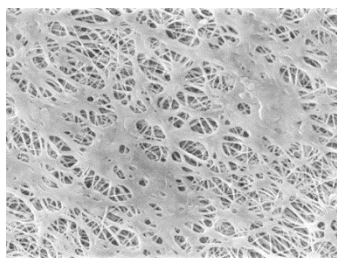
PTFE Membrane



GTM filters are part of Critical Process Filtration's economical, general service product line that can be used to lower the total cost of filtration from simple to the most complex applications. Produced using the same quality materials and manufacturing excellence as our other product lines, you can be assured of their performance, dependability and scalability. While general service filters are not integrity tested or validated for retention, these highly efficient filters remove large amounts of contaminants early in the process to reduce the load on your expensive downstream filters. They are also useful as stand-alone clarifying or particle removal filters in less critical applications.

GTM cartridge and capsule filters are configured with a Polytetrafluoroethylene (PTFE) membrane. These filters are compatible with many chemicals and are designed for filtering solvents, non-aqueous liquids, and compressed air and gases. They are well suited for the protection of tank contents in industrial manufacturing operations. Pore sizes range from 0.05 to 5.0 μm .

Critical Process provides unrivaled delivery times, technical consulting before purchasing, and very competitively priced high-performance products. Our comprehensive testing & analysis and validation services support your team whenever they need it. Your process experts partnering with our filtration experts is how we deliver your company's solution right the first time.



GTM filters are recommended for:

- Compressed Air
- Pressurized Gases
- Solvents
- Tank Vents

Fine Particle Removal

Process Gas & Vent Filters



CARTRIDGES – Nominal Dimensions
Length: 5 to 40 in. (12.7 to 101.6 cm)
Outside Diameter: 2.75 in. (7.0 cm)



CAPSULES – Nominal Dimensions
Length: 2 to 30 in. (5.1 to 76.2 cm)
Outside Diameter: 3.50 in. (8.9 cm)

Maximum Operating Parameters

	CARTRIDGES	CAPSULES
Liquid Operational Pressure	N/A	80 psi at 68 °F (5.52 bard at 20 °C)
Gases Operational Pressure	N/A	60 psi at 68 °F (4.14 bar at 20 °C)
Operating Temperature (water)	180 °F at 30 psid (82 °C at 2.07 bard)	110 °F at 30 psid (43 °C at 2.07 bard)
Forward Differential Pressure	80 psid at 68 °F (5.52 bard at 20 °C) (Liquid and Gas)	Liquid - 80 psid at 68 °F (5.52 bard at 20 °C) Gas - 60 psi at 68 °F (4.14 bar at 20 °C)
Reverse Differential Pressure	50 psid at 68 °F (3.45 bard at 20 °C)	50 psid at 68 °F (3.45 bard at 20 °C)
Recommended Changeout Pressure	35 psid (2.41 bard)	35 psid (2.41 bard)

Sanitization & Sterilization

Filtered Hot Water*	90 °C (194 °F), 30 minutes, multiple cycles, max 3 psid forward flow	N/A
Inline Steam*	275 °F (135 °C), 30 min, 25+ cycles	N/A
Autoclave*	250 °F (121 °C), 30 min, 25+ cycles	250 °F (121 °C), 30 min, 25+ cycles

Chemical Sanitization Performed using industry standard concentrations of hydrogen peroxide, peracetic acid, sodium hypochlorite and other selected chemicals.

*Cartridge Filters – For all elevated temperature procedures above, a stainless-steel support ring is required.

Filtration Area (Nominal)

	CAPSULES	CARTRIDGES AND CAPSULES				CARTRIDGES
Length	2"	5"	10"	20"	30"	40"
	5.08cm	12.7cm	25.4cm	50.8cm	76.2cm	101.6cm
Area	1.2 ft ²	3.3 ft ²	7.0 ft ²	14.0 ft ²	21.0 ft ²	28.0 ft ²
	0.11m ²	0.31m ²	0.65m ²	1.30m ²	1.95m ²	2.60m ²

Construction Materials

Filtration Media	Polytetrafluoroethylene (PTFE) Membrane
Media Support	Polypropylene
End Caps, Center Core, Outer Support Cage, Capsule Housing	Polypropylene
Sealing Method	Thermal Bonding
O-Rings/Gaskets Cartridges only	Buna, Viton® (or FKM), EPDM, Silicone, FEP Encapsulated Silicone, FEP Encapsulated Viton (or FKM)

High Temperature cartridge configuration is available.

Extractables

GTM filters typically exhibit low levels of non-volatile residues.

Non-Fiber Releasing

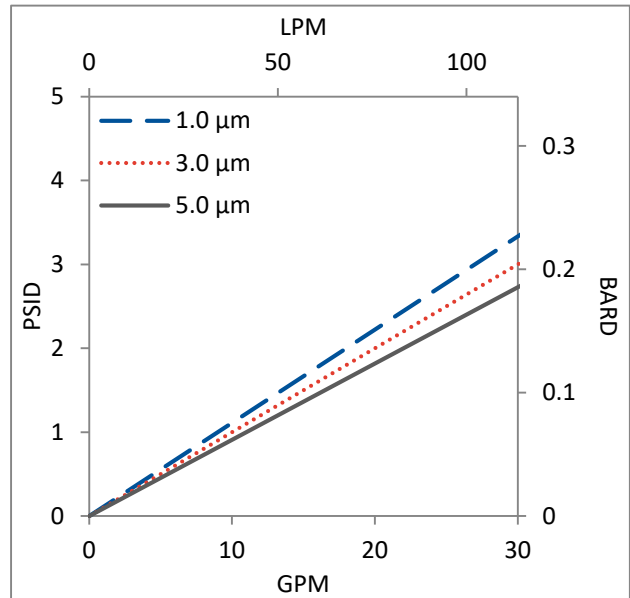
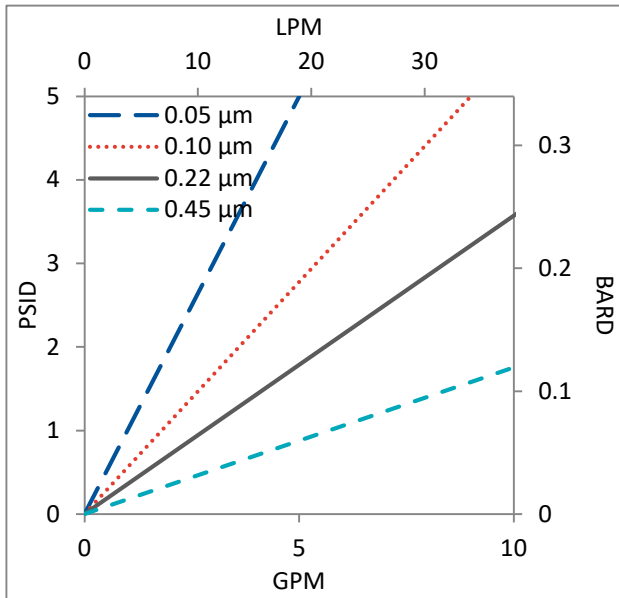
The GTM filters comply with Title 21 CFR sections 210.3 (b)(6) and 211.72, for non-fiber releasing filters.

FDA and EC Compliance

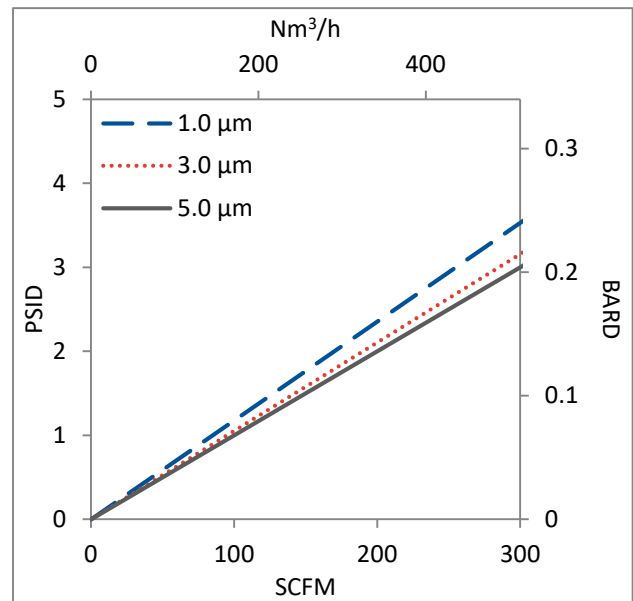
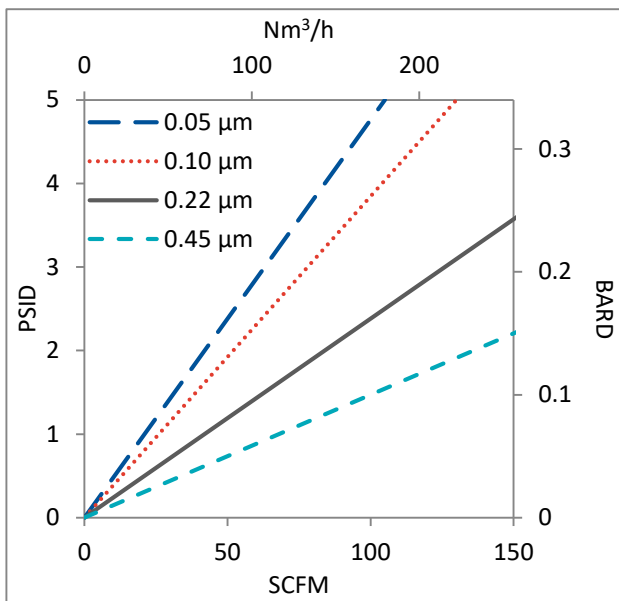
Materials meet the requirements listed by the FDA as appropriate for use in articles intended for repeated food contact as specified in Title 21 CFR sections 174.5, 177.1500, 177.1520, 177.1630, 177.2440, and 177.2600 as applicable. All materials used to make the filters are listed in European Commission Regulation EU/10/2011, Annex 1.

Flow Rates for GTM Cartridges by Pore Size

Water



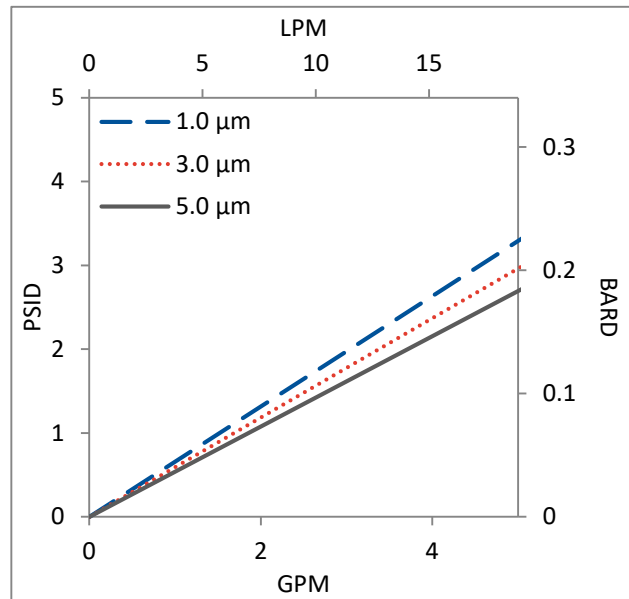
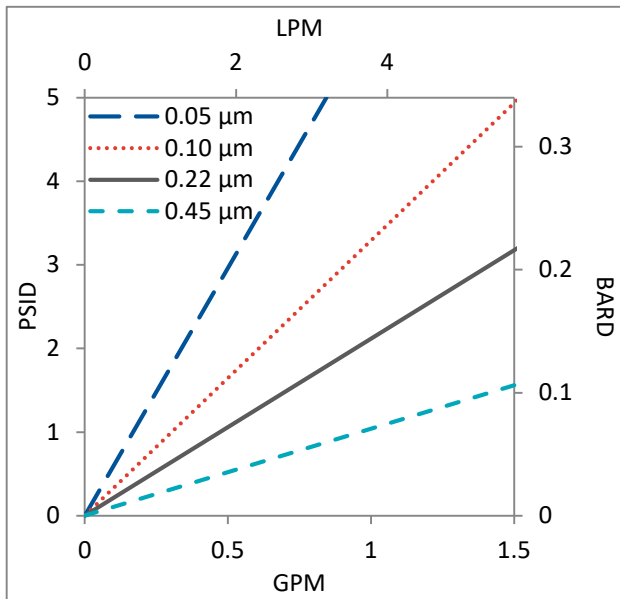
Air



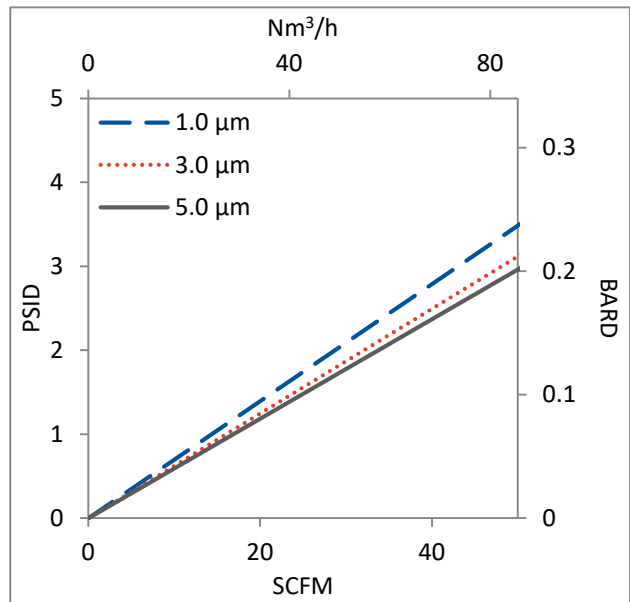
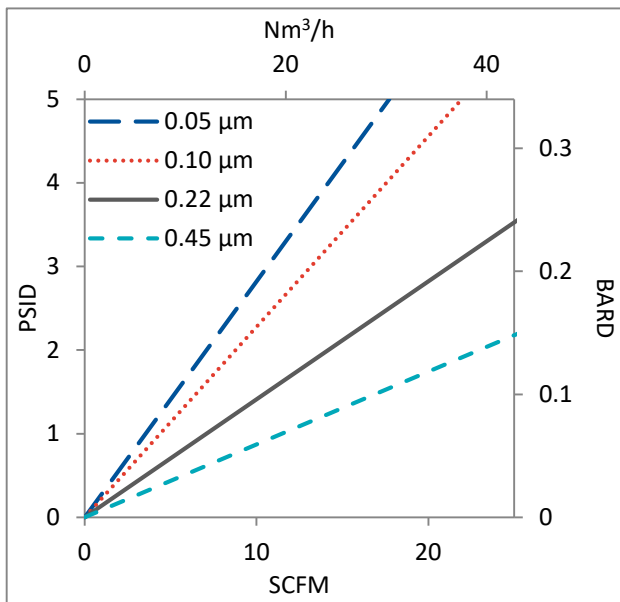
Flow rates for Cartridge filters are per 10-inch length. The test fluid is water or compressed air at ambient temperature.

Flow Rates for GTM Capsules by Pore Size

Water



Air



Flow rates for Capsule filters are tested using a 2" capsule filter with 1" sanitary inlet and outlet ports. The test fluid is water or compressed air at ambient temperature. Flow rates for larger capsules will scale with filtration area. Rates will vary based on end configuration of the capsule.

GTM Filters Ordering Information

Fill in the corresponding codes in the boxes below to build your Part Number.

To consult with one of our technical team members, request a quote or place an order:
call (603) 880-4420 or [contact us here](#).

Cartridge Filters

GTM

000

Pore Size Code

- 05 = 0.05 μm
- 10 = 0.10 μm
- 20 = 0.22 μm
- 40 = 0.45 μm
- 1-0 = 1.0 μm
- 3-0 = 3.0 μm
- 5-0 = 5.0 μm

SS Ring

- S = Ring
- N = No Ring

Length

- 05 = 5 in. (12.7 cm)
- 97 = 9.75 in. (24.8 cm)
- 01 = 10 in. (25.4 cm)
- 02 = 20 in. (50.8 cm)
- 03 = 30 in. (76.2 cm)
- 04 = 40 in. (101.6 cm)

O-Ring/Gasket Code

- S = Silicone
- B = Buna
- V = Viton (or FKM)
- T = FEP Encapsulated Viton (or FKM)
- E = EP
- R = FEP Encapsulated Silicone

End Cap Code*

- 0 = Flat Gasket, DOE
- 2 = 2-222 O-ring/Plug
- 4 = 213/119 Internal O-ring/Plug
- 5 = 2-222 O-ring/Flat
- 6 = 2-226 O-ring/Flat
- 8 = 2-222 O-ring/Spear
- 9 = 2-226 O-ring/Spear

[*Additional End Configurations Available](#)

Capsule Filters

CP GTM

000

Pore Size Code

- 05 = 0.05 μm
- 10 = 0.10 μm
- 20 = 0.22 μm
- 40 = 0.45 μm
- 1-0 = 1.0 μm
- 3-0 = 3.0 μm
- 5-0 = 5.0 μm

Pre-Sterilized or Not

- S = Pre-Sterilized
- N = Not Sterilized

Length

- A = 2"
- B = 5"
- 1 = 10"
- 2 = 20"
- 3 = 30"

Inlet

- A = 1/4" Female NPT
- B = 1/4" Male NPT
- C = 3/8" Female NPT
- D = 1/2" Female NPT
- E = 1/2" Male NPT
- F = 1" Sanitary
- G = Hose Barb*
- H = 1 1/2" Sanitary with side vent
- I = 1/2" Single Stepped Barb with side vent
- J = 3/4" Single Step Barb with Side Vent
- Y = 3/8" Compression (JACO®) (Top Luer lock vent only)
- Z = 6mm Quick Disconnect (Top Luer lock vent only)

Outlet

- A = 1/4" Female NPT
- B = 1/4" Male NPT
- C = 3/8" Female NPT
- D = 1/2" Female NPT
- E = 1/2" Male NPT
- F = 1" Sanitary
- G = Hose Barb*
- H = 1 1/2" Sanitary with side vent
- I = 1/2" Single Stepped Barb with side vent
- IB = 1/2" Single Stepped Barb with filling bell and side vent
- J = 3/4" Single Step Barb with Side Vent
- Y = 3/8" Compression (JACO®) (Top Luer lock vent only)
- Z = 6mm Quick Disconnect (Top Luer lock vent only)

Side Vent Options

- 1 = Luer Lock
- 2 = 1/8" Bleed Valve
- 3 = 1/4" Bleed Valve

O-Rings (Bleed Valves Only)

- S = Silicone
- E = EP
- V = Viton
- B = Buna
- K = FFKM

*Fits hoses/tubes with inner diameter 11/32 to 9/16 inches



One Chestnut Street
Nashua, NH 03060
603.880.4420
FAX: 603.880.4536
CriticalProcess.com

The information contained herein is subject to change without notice. The Critical Process Filtration logo is a trademark of Critical Process Filtration, Inc. Viton is a trademark of DuPont Performance Elastomers L.L.C.
© 2025 Critical Process Filtration, Inc. • All Rights Reserved